

CMC01003: Behavioral Health

CA Health Plan Compliance Training

May 2022



Introduction

In this training, you will learn:

Cal MediConnect (CMC) Population.

Health Plan Options.

Care coordination—Specialized behavioral services, Interdisciplinary Care Teams (ICT).

Data sharing requirements.



Introduction & Training Goals

This course is designed to help you understand:

CMC patients.

Behavioral Health (BH) program benefits available.

The need for these services and treatments.

Financial responsibility for the types of services provided for patients.



CMC Population

Members who qualify for CMC receive both Medicare and Medicaid benefits:

- CMC Population includes people who have:
 - Medical or mental health conditions
 - Disabilities
 - Substance use disorder
 - Social isolation
 - Poverty
 - Abuse



Health Plan Options

Mental health is not a service that is delegated to medical groups:

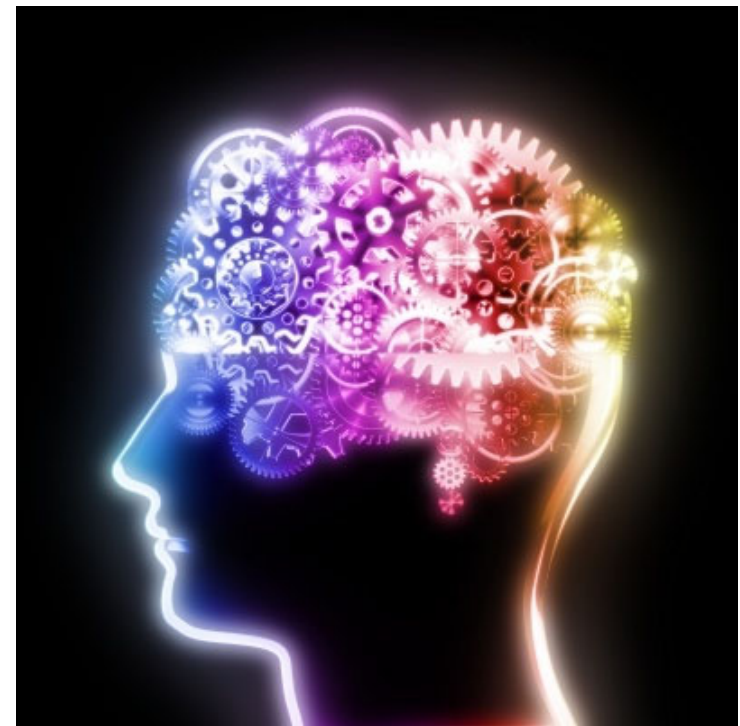
- Each health plan uses different specialty vendors to provide mental health services.
- Refer to member's ID card for their assigned vendors.



Health Plan Options

Behavioral health (BH) benefits include:

- Individual and group mental health evaluation, therapy and treatment services
- Psychological testing where prior authorization is required
- Crisis intervention and stabilization
- Targeted case management
- Medication support services



Care Coordination

Specialized BH services:

- ❑ Additional specialty mental health services are available for members who meet criteria for specialty level of care:
 - ❑ Members who meet criteria for severe persistent mental illness (SPMI) can be connected with the county's Department of Mental Health (DMH).
 - ❑ Members in need of substance use treatment may access services through Department of Public Health/Substance Abuse Prevention and Control (DPH/SAPC).
 - ❑ Multiple entry paths to access care for BH services.
 - ❑ Formalized and timely level-of-care transition is a priority.



CMC BH Services

Health plan responsibility:

BH Outpatient	BH Inpatient and Outpatient
<ul style="list-style-type: none"><input type="checkbox"/> Non-specialty<input type="checkbox"/> Mild/moderate level of functional improvement	<ul style="list-style-type: none"><input type="checkbox"/> Specialty<input type="checkbox"/> High, moderate and severe levels of functional impairment<input type="checkbox"/> Intensive treatment<input type="checkbox"/> Substance use treatment services



CMC BH Services

IPA & PPG responsibility:

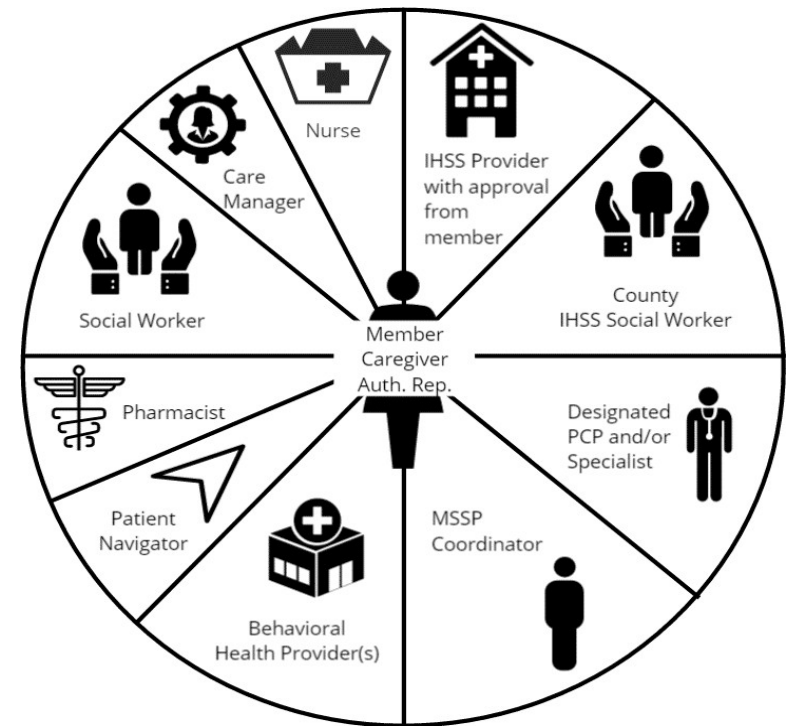
Non-Specialty	Specialty
<ul style="list-style-type: none">❑ General medical, acute hospital or facility: Psychiatric valuation/consult, and psychiatric evaluation for medical procedure/surgery❑ Services in facilities: Skilled nursing facility (SNF), long term care facility (LTC), behavioral health services❑ Outpatient (office-based): Medication services and individual or group therapy❑ SNF and Hospital Placement support: Includes co-occurring disorders	<ul style="list-style-type: none">❑ Medication services, targeted case management, crisis intervention/stabilization, and day treatment intensive/rehabilitation services for members with high, moderate to severe BH conditions and functional impairments

Note: Accessing outpatient BH services **do not** require a referral.

Interdisciplinary Care Team (ICT)

Licensed BH clinicians participate in ICT to coordinate member needs:

- ❑ Low and moderate risk members are managed by PPGs
- ❑ Complex and high-risk members are managed by health plans' care management department
- ❑ Vendor staff are invited to attend ICTs to address and coordinate member's care as needed



Data Sharing Requirements

Requirement:

- ❑ Health plans' and counties' mental health and substance abuse agencies are required to expand and develop Memorandum of Understandings (MOU) to coordinate care between specialty and non-specialty mental health symptoms of care for shared members of Los Angeles County.



Optum

Optum is a registered trademark of Optum, Inc. in the U.S. and other jurisdictions. All other brand or product names are the property of their respective owners. Because we are continuously improving our products and services, Optum reserves the right to change specifications without prior notice. Optum is an equal opportunity employer.

© 2022 Optum, Inc. All rights reserved.